

Rotherhithe Community Council

Please note venue. A community safety surgery will be held at 6.30pm prior to the meeting, come along and speak to the community safety wardens and safer neighbourhoods teams.

Wednesday 27 April 2011
7.00 pm

The Norwegian Church in London, 1 St.Olav's Square, London SE16 7JB

Membership

Councillor Jeff Hook (Chair)
Councillor Wilma Nelson (Vice-Chair)
Councillor Columba Blango
Councillor David Hubber
Councillor Richard Livingstone
Councillor Catherine McDonald
Councillor Paul Noblet
Councillor Lisa Rajan
Councillor Michael Situ

Members of the committee are summoned to attend this meeting

Annie Shepperd

Chief Executive

Date: Friday 15 April 2011



Order of Business

- | Item No. | Title |
|----------|--------------------------|
| 1. | INTRODUCTION AND WELCOME |
| 2. | APOLOGIES |

Item No.	Title	Time
3.	DISCLOSURE OF MEMBERS' INTERESTS AND DISPENSATIONS	
	The chair to advise whether they have agreed to any item of urgent business being admitted to the agenda.	
4.	ITEMS OF BUSINESS THAT THE CHAIR DEEMS URGENT	
	Members are asked to declare any interest or dispensation and the nature of that interest or dispensation which they may have in any of the items under consideration at this meeting.	
5.	MINUTES FROM THE PREVIOUS MEETING (Pages 4 - 13)	
	To confirm as a correct record the minutes of the meeting held on 3 March 2011.	
6.	CHAIR'S ANNOUNCEMENT AND COMMUNITY PRESENTATIONS (Page 14)	7.10 pm
	<ul style="list-style-type: none"> • The Council Assembly for May 2011 will have a Sport and Young People theme. • The launch of this year's Community Council Fund. • Olympic Legacy Capital Funding – closing date 29 April 2011 • Canada Water AAP and Residential Design Standards – consultation. 	
	Presentations	
	<ul style="list-style-type: none"> • Cafe Gallery Projects – children and parks • Russia Docks Woodland – biodiversity in the area 	
7.	DEPUTATIONS/PETITIONS (IF ANY)	7.20 pm
	The chair to advise on any deputations or petitions received.	
8.	COMMUNITY SAFETY UPDATES (IF ANY)	7.25 pm
	Officers from the Safer Neighbourhoods Teams to update meeting on policing and ward priorities.	
9.	PUBLIC QUESTION TIME (Page 15)	7.35 pm
	Please submit your written questions to the Constitutional Officer or Neighbourhood Co-ordinator.	

Item No.	Title	Time
MAIN THEME: PARKS AND OPEN SPACES		
10.	COMMUNITY UK POWER NETWORK - SOUTHWARK PARK	7.40 pm
11.	SOUTHWARK PARK NURSERY (FISH FARM)	7.50 pm
12.	PARKING CHARGES BASED ON CARBON EMISSIONS / RESIDENTIAL PARKING	7.55 pm
	Officer presentation.	
13.	KING STAIRS GARDENS - FEEDBACK FROM THAMES WATER	8.00 pm
14.	UPDATE ON SELCHP (SOUTH EAST LONDON COMBINED HEAT AND POWER FACILITY)	8.10 pm
	Presentation from the Energy programme manager.	
15.	CONSULTATION ON THE REDEVELOPMENT OF LONDON BRIDGE STATION 5 YEAR PLAN	8.20 pm
16.	LOCAL PARKING AMENDMENTS (Pages 16 - 20)	8.30 pm
	Executive decision	
	Members to take formal decisions on the attached report.	

Please note:

There will be opportunity to break for refreshments and networking at the end of the meeting.

Date: Friday 15 April 2011

INFORMATION FOR MEMBERS OF THE PUBLIC

CONTACT: Beverley Olamijulo, Constitutional Officer, Tel: 020 7525 7234 or email: beverley.olamijulo@southwark.gov.uk
Website: www.southwark.gov.uk

ACCESS TO INFORMATION

On request, agendas and reports will be supplied to members of the public, except if they contain confidential or exempted information.

ACCESSIBLE MEETINGS

The council is committed to making its meetings accessible. For further details on building access, translation and interpreting services, the provision of signers and other access requirements, please contact the Constitutional Officer.

Disabled members of the public, who wish to attend community council meetings and require transport assistance in order to attend, are requested to contact the Constitutional Officer. The Constitutional Officer will try to arrange transport to and from the meeting. There will be no charge to the person requiring transport. Please note that it is necessary to contact us as far in advance as possible, and at least three working days before the meeting.

BABYSITTING/CARERS' ALLOWANCES

If you are a resident of the borough and have paid someone to look after your children or an elderly or disabled dependant, so that you can attend this meeting, you may claim an allowance from the council. Please collect a claim form from the Constitutional Officer at the meeting.

DEPUTATIONS

Deputations provide the opportunity for a group of people who are resident or working in the borough to make a formal representation of their views at the meeting. Deputations have to be regarding an issue within the direct responsibility of the Council. For further information on deputations, please contact the Constitutional Officer.

**For a large print copy of this pack,
please telephone 020 7525 7234.**

Rotherhithe Community Council

Language Needs

If you would like information on the Community Councils translated into your language please telephone 020 7525 7234 or visit the officers at 160 Tooley Street, London SE1 2TZ

Spanish:

Necesidades de Idioma

Si usted desea información sobre los Municipios de la Comunidad traducida a su idioma por favor llame al 020 7525 7234 o visite a los oficiales de 160 Tooley Street, Londres SE1 2TZ

Arabic:

إحتياجات لغوية
إذا كنت ترغب في الحصول على معلومات عن مجالس المجموعات المحلية وترجمتها إلى لغتك
الرجاء الإتصال برقم الهاتف: 020 7525 7234 أو زيارة المكتب في 160 Tooley Street
SE1 2TZ London

Portuguese:

Necessidades de Linguagem

Se você gostaria de informação sobre Community Councils (Concelhos Comunitários) traduzida para sua língua, por favor, telefone para 020 7525 7234 ou visite os oficiais em 160 Tooley Street, London SE1 2TZ

French:

Besoins de Langue

Si vous désirez obtenir des renseignements sur les Community Councils traduits dans votre langue, veuillez appeler le 020 7525 7234 ou allez voir nos agents à 160 Tooley Street, London SE1 2TZ

Polish:

Potrzeby Językowe

O informacje dotyczące Community Council dostępne w Państwa ojczystym języku można poprosić pod numerem telefonu 020 7525 7234 lub w biurze, pod adresem 160 Tooley Street, London SE1 2TZ

Cantonese:

語言上的需要

如果你喜歡社區議會的資訊翻譯成你的語言，請致電020 7525 7234 或前往160 Tooley Street, London SE1 2TZ面見有關官員。

Turkish:

Dil İhtiyaçları

Eğer Community Councils (Toplum Meclisleri) ile ilgili bilgilerin kendi ana dilinize çevrilmesini istiyorsanız, lütfen 020 7525 7234 numaralı telefonu arayınız veya 160 Tooley Street, London SE1 2TZ adresindeki memurları ziyaret ediniz.

Twi:

Kasaa ohohia,

se wopese wo hu nsem fa Community Councils ho a, sesa saakasa yie ko wo kuro kasa mu. wo be tumi afre saa ahoma torofo yie 020 7525 7234 anase ko sra inpanyinfo wo 160 Tooley Street, London SE1 2Tz.



ROTHERHITHE COMMUNITY COUNCIL

MINUTES of the Rotherhithe Community Council held on Thursday 3 March 2011 at 7.00 pm at Links Community Centre, 353 Rotherhithe New Road, London SE16 3HF

PRESENT: Councillor Jeff Hook (Chair)
 Councillor Wilma Nelson (Vice-Chair)
 Councillor David Hubber
 Councillor Richard Livingstone
 Councillor Catherine McDonald
 Councillor Michael Situ

OFFICER SUPPORT: Forid Ahmed (Neighbourhood Co-ordinator)
 Gill Kelly (Community Council Development Officer)
 Beverley Olamijulo (Constitutional Officer)

1. INTRODUCTION AND WELCOME

The chair welcomed members of the public, councillors and officers to the community council meeting.

2. APOLOGIES

There were apologies for absence from Councillors Columba Blango, Paul Noblet and Lisa Rajan; and Councillor Catherine McDonald submitted her apologies for lateness.

3. DISCLOSURE OF MEMBERS' INTERESTS AND DISPENSATIONS

There were none.

4. ITEMS OF BUSINESS THAT THE CHAIR DEEMS URGENT

The chair agreed to accept the following item as late and urgent as the report was received after the agenda despatch deadline which also had to be considered in conjunction with the Council's transport planner. In addition the outcome could have cost implications for the Council and the Public Inquiry has to be heard by 19 & 20 April 2011:

Item 15, Pacific Wharf, 165 Rotherhithe Street, London SE16 5QF – Application 10-AP-1536.

5. MINUTES FROM THE PREVIOUS MEETING

RESOLVED:

That the minutes of the meeting held on 20 January 2011 be agreed as a correct record of the meeting and signed by the chair.

Note:

The motion concerning the business case for a new secondary school in Rotherhithe, submitted at community council on 20 January 2011 and its subsequent response from the relevant cabinet member for children's services at the community council on 3 March should be appended to the minutes.

6. CHAIRS ANNOUNCEMENTS AND COMMUNITY PRESENTATIONS

The chair announced:

Council Assembly on 6 April 2011 will be considering "the future for Southwark developing our plan for the Borough". This is a council led initiative for Council Assembly to develop closer links with community councils. People were told to keep an eye on the council's website to post your views or submit a question or raise a deputation at the April meeting from mid-March: www.southwark.gov.uk/democracy

Southwark Council has set up a Democracy Commission with the aim of bringing the Council closer to its residents, making it more accountable to them and more connected with their concerns.

There were also displays and artefacts at the meeting from ECO Schools, the Pumphouse Educational Museum and Surrey Docks Farm. Representatives were there to highlight what they do.

7. DEPUTATIONS/PETITIONS

There were none.

8. COMMUNITY SAFETY UPDATE

The community council noted the safer neighbourhood teams updates on community safety matters.

The SNT representative reported that a PCSO arrested a suspected burglar who has already been charged with several offences relating to burglary. The safer neighbourhood teams have been dealing with anti social behaviour on local housing estates and are

currently working with the families that live on the estates and the Council.

The priorities for Surrey Docks ward are: Drug warrants on the Opsrey Estate, training on speed guns on Salter Road. The next stage is enforcement training and automated recognition for number plate reading to catch those committing road offences, stolen vehicles and immigration offences.

Questions were asked about the spate of burglaries in Surrey Docks ward which include those committed in the Downtown area. The person arrested was also part of a gang responsible for this sort of crime. The Police representative said he was confident the individual would be charged and serve time for his offences.

People were encouraged to increase their awareness, get to know their neighbours and if you suspect anything report it to the Police.

Further updates would be given at the next meeting.

9. PUBLIC QUESTION TIME

The following questions were submitted:

Q1: What is the latest position on the proposed routes for the Thames Tunnel and proposed use of King Stairs Gardens and St John's Estates?

A1: Recent press release suggests that Thames Water are considering alternatives sites but no other information has been provided.

Q2: Please could you confirm whether the future proposals for community councils is to pair them up in accordance with the areas e.g. Bermondsey with Rotherhithe and the like?

A2: Cllr Richard Livingstone: Southwark faces the biggest challenge due to the cuts however no decision has been made about merging community councils.

Q3: Please could the community council explain what the Council are doing to help those in the armed forces particularly with regard to assisting them with housing?

A4: At a recent full Council meeting a deputation was heard about the Southwark Tribute to Heroes to provide support and housing for those in the armed forces. A motion was passed at the meeting to prioritise people who have served in the armed forces particularly after serving the country.

Q5: Since the last community council meeting a public question was raised about the pathway at Surrey Docks Water Centre which still remains closed.

A5: The Chair: I understand the relevant cabinet member for culture, leisure, sport and the Olympics was to take the appropriate steps to visit the centre.

Cllr Hubber mentioned at this segment of the meeting that Thames Clippers river travel would be reducing their journey times which would affect those working late or who attend

social events. A meeting took place with GLA member, Caroline Pidgeon, local Councillors and representatives of Thames Clippers who have now decided to reinstate some of the operation times.

10. EDUCATION THEME

Early Years representative, Rotherhithe Primary School

A representative from Rotherhithe Primary School was present to outline that the school were able to secure funding for a children's centre which provides a range of activities for the pupils. He explained that he would like parents to become more involved like the Parents Forum which encourages them to run activities.

The parent representatives are committed and are encouraged to be active and develop their skills. The Forum meet on Wednesdays at 1.00pm – 2.45pm.

General overview of education, secondary and primary

Pauline Armour, Assistant Director of 05 – 11 services & inclusion was present to give an overview of education provision in Southwark. She said that the quality of education has improved and is reflected in the league tables, it is also due to good partnership because exam results are now in line with the national average.

Ofsted considered most schools in the area had reached their targets and raised attainment even though the Council are still looking at new ways to raise standards in Southwark Schools. In Rotherhithe, proposals are being forward to raise attainment in some primary schools whereas had exceeded the national average in line with more wealthier boroughs like Richmond.

Admissions Policy

Cllr David Hubber spoke in his role as a member of scrutiny children's services explained the sub committee are seeking information about admissions, visiting schools and talking to parents. The current policy is too detailed and difficult for those whose English is not their first language. He encouraged people to put their views across to local councillors, the scrutiny clerk or the Rotherhithe neighbourhood coordinator.

People expressed their views about the admissions policy at Bacon's College stressing that the policy should change. Demographically it is not sustainable, needs forward thinking and planning. Local children who live in the Downtown area leave home early to attend neighbouring colleges in other parts of the Borough and in cases outside the Borough.

School Governor Support – role and responsibilities

David Lister, Manager of School Governor Support was present to talk briefly about the team's role and responsibilities. He explained that previously governors did not have the powers they have now. Since 1986 the local authority has less powers but the school, head teacher and governing body have more of say.

The support team also provide training sessions at Schools, provide topic training in general and provide advice and support to those wishing to be a school governor.

What do Governors do?

They are in charge of the strategic element of the running of the School but not day to day running, that is the role of the head teacher.

The 2002 Education Act explains what the role of a school governor is a crucial role on of which is to appoint a head teacher and on a rare occasion dismiss a head teacher.

A school governor is involved in strategic planning, oversee the budget and looking at children's attainment.

The different types of governors

- Parent governors, you do not have to be a parent or know about education matters. No qualifications are necessary but you must show a genuine commitment for the four year period. You would be expected to attend three meetings per term and the visit the School during the day.
- Local authority governors are appointed by the local authority that maintains the school. Authorities can decide to fill these posts to reflect the local political balance, although such governors are primarily appointed with a view to their commitment to raise standards at the school concerned.
- Community governors are appointed by the governing body. They are intended to enable the governing body to add specific areas of expertise. Also they could be local business people or a parent of a school. All categories of school, except voluntary aided schools, have community governors. Community governors cannot be employed to work at the school, be pupils currently at the school or be an elected member of the local authority.
- Foundation governors (at voluntary aided, voluntary controlled and some foundation and foundation special schools only) are selected by the appointing body to which the school is attached i.e. church schools. They are appointed to preserve and develop the religious character of the school.

Role of the clerk, governing body meetings

The clerk is responsible for producing agenda, minutes and provide advice. The officer stressed that it was important to have a professional clerking so the person's relevant skills are adhered to guidelines.

Cabinet member for children's services

Cllr Catherine McDonald introduced herself as cabinet member for children's services. She stated that there is a urgent need for a new School in Rotherhithe after the previous administration put forward a business case under the Southwark Building Schools for future decided to withdraw the funding.

In light of this proposals are being put forward to fund extra class rooms spaces and to

confirm with central Government how much money the Council could have to explore ways of providing those additional school places.

Cllr McDonald urged people to take part in the consultation process. Reference was also made in regard to the motion submitted at the last meeting concerning the above explaining that it was the present central Government who decided to withdraw funding.

The chair, Cllr Jeff Hook stated no confirmation has been given from central Government to withdraw the £20 million funding for the new school in Rotherhithe.

Simon Hughes MP stated that there is clearly a demand for a secondary school in the Borough. It is important that the site should be council owned because if it were private land then it could be more expensive. He stressed that if the Council could make a case then central Government would respond to that. In his views there is a case which should go ahead based on the previous administration's recommendations as there is a urgent need for a secondary School.

Simon Hughes MP explained that if the proposal went ahead the Council should consider a non denomination school to give parents a choice and that he hoped it would be also be a secular school this could prove popular like Bacon's College.

Cllr Catherine McDonald said it was important to note that both the present administration and local MP agree for this school to go ahead.

Some local residents felt the new school should be somewhere in the Hawkstone area and a 1300 student school is likely to be too small.

At the end of questions and discussion there was a general consensus that a catchment school was needed in the Rotherhithe area and the Council should immediately pursue a business case to central Government.

The chair confirmed that any issues of local concern that are raised at community councils could be submitted by way of a deputation or public question at Full Council.

Therefore the urgent need for a secondary school in Rotherhithe would be highlighted to the next Full Council and feedback given at the next meeting.

11. SOUTHWARK RENEWABLE ENERGY DISTRICT HEATING

This item was withdrawn.

12. DRAFT AIR QUALITY STRATEGY AND ACTION PLAN

Bill Leggasick, Principal Environment Officer presented this item.

Air quality affects us all in our daily lives and we breath in pollution from a variety of sources which cause health effects. As part of reviewing and assessing air pollution the

process which identifies all pollutant concentration objectives were met in Southwark with the exception of NO₂ (nitrogen dioxide) and PM₁₀ (particulate matters) dust particles. The Council were consulting on the air quality strategy and improvement plan which has to be updated. The London Mayor has also introduced an quality strategy emphasising the importance of reducing emissions from vehicular transport and protect public health and monitor air quality.

The main objectives are:

- To tackle carbon emissions – transport sources i.e. pollution coming out of diesel engines.
- To protect public health and monitor air quality.
- To reduce emissions from new development.

Those present at the meeting were encouraged to go online so their views could be taken into consideration. Other consultees include GLA (Greater London Assembly), DEFRA (Dept for Environment, Food & Rural Affairs) as well as local residents. The period for consultation was from the 1 March until 20 April 2011. It would then be taken to the Council's cabinet meeting in September 2011.

Comments were expressed about the air quality monitoring equipment at the Rotherhithe roundabout and the air quality data in surrounding areas of Surrey Canal and Surrey Docks.

The chair thanked the officer for his presentation.

13. EXCLUSION OF PRESS AND PUBLIC

RESOLVED:

That the public be excluded from the meeting for the following items of business on the grounds that they involve the likely disclosure of exempt information as defined in paragraphs 1 and 2, Access to Information Procedure rules of the Constitution

14. LEA SCHOOL GOVERNOR APPOINTMENTS

Executive decision

RESOLVED:

That Sophie Kilvert be appointed as a school governor at Federation of Eveline Lowe and Ilderton Primary Schools.

**15. DEVELOPMENT CONTROL ITEM - PACIFIC WHARF, 165
ROTHERHITHE STREET, SE16 5QF**

Development Management planning appeal:

Refusal of Full Planning Permission to change the use of A1 retail unit at ground floor into six residential units with outdoor amenity space, including erection of walls.

Planning application number: 10-AP-1536

PROPOSAL

Parking study submitted to address reason for refusal 3 in connection with Planning Appeal: APP/A5480/A/10/2138387/NWF

The chair agreed to accept the item for reasons of urgency and lateness as set out in the report.

The planning officer was present to respond to questions from Members.

No objectors were present.

RESOLVED:

That the Community Council agreed not to pursue the third reason for refusal.

The meeting ended at 9.10 pm

CHAIR:

DATED:

'Rotherhithe Community Council is very disappointed to hear that the Council is not pursuing the business case for a new secondary school at Rotherhithe and requests the Leader of the Council revisit the current and future pupil projections to ensure that every effort is made to accurately quantify the locally acknowledged need for secondary school places in the area and make a persuasive case for the Secretary of State.

RCC asks the Council to share with the community its plans for meeting demand for secondary school places in the Rotherhithe area and for an explanation why the Council is not pursuing the BSF funding route'.

1. On 2nd May 2007, Southwark Executive approved the Southwark Schools for the Future Outline Business Case (OBC). Southwark's OBC established the case for a new 5 form entry secondary school with a 150 place sixth form to meet the needs of an expanding population in Bermondsey and Rotherhithe that would be delivered as part of Phase 3 of Southwark's BSF.
2. A site selection process was conducted and formed part of the Rotherhithe Area Action Plan. This identified Rotherhithe Primary School as the most appropriate site.
3. In March 2010 Southwark Executive approved a submission to Partnerships for Schools (Pfs) to confirm the funding for Phase 3 of Southwark's BSF programme.
4. In April 2010 Partnerships for Schools provisionally allocated £19.6m to fund the delivery of a new school in Rotherhithe.
5. Bacon's College is a popular school on the Rotherhithe peninsula. Bacon's trustees were invited to act as sponsors of the proposed Academy and were engaged in positive discussions with the Authority and the existing primary school.
6. In May 2010 Partnerships for Schools required Southwark to refresh our pupil place planning with actuals and resubmit for their review. This review showed that boroughwide pupil place need had remained flat, and not yet increased as per the planning data included in our OBC.
7. In July 2010 Southwark was informed that all our projects, including New School Rotherhithe, were unaffected by the cuts to the BSF programme that were announced.
8. In October 2010 Pfs informed the council that projects referred to as 'unaffected' in July would be subject to a value for money review to be carried out on behalf of the Department for Education. Initially, reference was made to the DfE seeking savings of up to 40% across remaining BSF programmes, referred to as BSF Legacy, nationally. This target figure was since not referred to.
9. In November 2010 the DfE wrote to the council advising us of their decision to no longer support New School Rotherhithe as a result of the pupil place planning data submitted to them in the summer.

MOTION: NEW SECONDARY SCHOOL IN ROTHERHITHE -
agreed at Rotherhithe community council on 20 January 2011

10. The DfE had accepted our pupil place planning data showing the need for a new school but considered that the need fell outside of the timescales appropriate for BSF investment.
11. They had concluded that as demand for places would not be apparent until further in the future than projected at OBC and that, based on increases already programmed or underway (i.e. Sacred Heart, New School Aylesbury), boroughwide and without a planning margin, there were sufficient places for Year 7 intake until the start of 2018/19. The OBC delivery timescale for New School Rotherhithe was 2013.
12. The Council continued to argue the case to the DfE and PfS that there was a need to deliver the New School Rotherhithe to meet current local demand and anticipated future boroughwide need.
13. The DfE accepted the need to deliver new places in Rotherhithe through BSF and to this end confirmed support to the council to enable the delivery of an additional 2 forms of entry (300 secondary places). On this basis, the DfE arranged for the YPLA to contact Bacon's College to inform them of their decision to withdraw funding for New School Rotherhithe. They also initiated a discussion in regard to their potential expansion.
14. Aside from an initial discussion with Bacon's College options for the establishment of these new places have not been explored. A full options appraisal will need to be conducted and detailed consultation carried out with stakeholders to identify the most appropriate way to deliver these additional places. This will only be possible following confirmation of the funding available.
15. Boroughwide, Headteacher and Academy sponsors of existing schools have expressed concern in regard to an overprovision of secondary places and in particular new places at Aylesbury and in Rotherhithe undermining their viability. There are a number of schools in the borough that are undersubscribed. The trustees of Bacon's have sought further assurances in regard to pupil place demand ahead of any further consideration of providing additional places.
16. The Council has reviewed the pupil place planning data submitted to the DfE in 2010 and concluded that it remains robust.
17. The outcome of the BSF Legacy review, and confirmation of funding for additional places in Rotherhithe, is expected during February 2011 and this shall inform a Cabinet later in the Spring.

£2m Olympic capital legacy funding: bidding is open!

Make difference to your local community

Help improve access to sport in Southwark

Southwark Council's £2m capital legacy fund could be just what you need to get your project off the ground



As part of Southwark commitment to a lasting legacy from the Olympics and Paralympics Games in 2012 we are inviting project bids on how we can best spend £2M of capital funds to improve participation in sport within the borough.

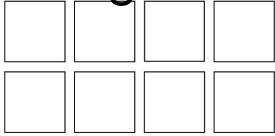
We want to make it easier for local people to participate in sport and physical activity

If you or your organisation want to build an outdoor gym or refurbish a sports facility, this money is available to bid for.

Closing date: 29 April 2011

For more information and to apply visit www.southwark.gov.uk/olympics.

Agenda Item 9



COMMUNITY COUNCILS
A voice for your community



Rotherhithe Community Council

Public question form:

Your name:

Your mailing address:

What is your question?

Please give to Beverley Olamijulo, Constitutional Officer, Forid Ahmed, Neighbourhood Coordinator or Gill Kelly, Community Council Development Officer

Item No. 16	Classification: Open	Date: 27 April 2011	Meeting Name: Rotherhithe Community Council
Report title:		Local parking amendments	
Ward(s) or groups affected:		All wards within Rotherhithe Community Council	
From:		Senior Engineer, Network Development	

RECOMMENDATION

1. It is recommended that the following local parking amendment, detailed in the appendix to this report, is approved for implementation subject to the outcome of any necessary statutory procedures:
 - Hawkestone Road – Install one new loading only bay and extend the length of an existing permit bay and “at any time” waiting/loading restrictions

BACKGROUND INFORMATION

2. This report presents proposals for a number of local parking amendments, which are reserved to the Community Council for decision under Part 3H of the constitution.
3. The origins and reasons for the proposals are discussed in the main body of the report.

KEY ISSUES FOR CONSIDERATION

Hawkestone Road (1011Q2029) – Proposed loading only bay, extension to permit bay and extension of waiting/loading restrictions

Background

4. The network development team received correspondence from a local business in July 2010 concerning the lack of available loading opportunity outside their premises on Lower Road.
5. An engineer from network development visited this location to ascertain the loading availability and to identify possible options for loading to the businesses.
6. The frontage of the businesses is situated on Lower Road where existing parking restrictions prohibit waiting and loading at any time. These restrictions are required due to the strategic nature of Lower Road, proximity to a signalized junction and width of the carriageway. The highway at this location is unsuitable to support any loading facility.
7. The nearest alternative location for provision of a loading facility for this business is in the adjacent road: Hawkestone Road. It is further noted that the business also has an entrance on this road, due to its corner location.

8. A recommendation was made to Rotherhithe Community Council on 20 January 2011 that a loading bay should be installed in Hawkstone Road. However no decision was made for the following reasons *“The local parking amendment for Hawkstone Road (1011Q2029) was not approved because Members felt that further consultation should take place so that consideration could be given for additional ‘loading only’ parking bays to be installed further along Hawkstone Road.”*
9. Officers have subsequently reevaluated the matter and revised the proposal so as to offset the loss of four pay and display bays with two additional permit parking bays.
10. This approach is recommended on the basis that there is no logical alternative to the position of the loading bay originally proposed to the community council in January but will provide additional parking bays for residents and their visitors (through use of resident-visitor permits) that are reported to be in short supply.
11. The business premises (The Yellow House) currently take deliveries up to 6 times per day and are being forced to do so in contravention of existing restrictions (ie on an existing loading ban).
12. To have located the loading bay further away from the premises would make no logical sense as delivery companies are likely to continue to load in contravention if the facility isn't suitably located (and thus just waste kerb space). Furthermore, this proposal would not be in line with policy.
13. The policy context for this recommendation is clear, the council's parking hierarchy places "local business essential parking/servicing need" (i.e. a loading bay) above "visitor parking" (i.e. pay and display parking).
14. The new permit bay will replace a stretch of existing single yellow line which serves no clear purpose except to delineate the change in parking type between two adjacent parking bays; there is no legal requirement to have such a gap.
15. It is recommended, as shown in Appendix 1, that a 10 metre length of "at any time" waiting/loading restriction, a 10 metre loading only bay and a 9.2m permit bay extension is installed in the locations shown in that drawing.

POLICY IMPLICATIONS

16. The recommendations contained within this report are consistent with the policies of the Parking Enforcement Plan and associated Local Implementation Plan (LIP)
17. The proposals will support the council's equalities and human rights policies and will promote social inclusion by:
 - Providing a loading only facility for deliveries to business premises

COMMUNITY IMPACT STATEMENT

18. The policies within the Parking and Enforcement Plan are upheld within this report have been subject to an Equality Impact Assessment (EqIA).

RESOURCE IMPLICATIONS

19. All costs arising from implementing the proposals, as set out in the report, will be fully contained within the existing local parking amendment budget.

CONSULTATION

20. No informal consultation has been carried out.

21. Should the community council approve the item, statutory consultation will take place as part of the making of the traffic management order. A proposal notice will be erected in proximity to the site location and a press notice will be published in the Southwark News and London Gazette. If there are objections a further report will be re-submitted to the community council for determination.

22. The road network and parking manager has been consulted on the proposals and has no objections.

23. No consultation or comment has been sought from the Strategic Director for Communities, Law and Governance or the Finance Director.

BACKGROUND DOCUMENTS

Background Papers	Held At	Contact
Parking and Enforcement Plan	Network development Public realm Environment 160 Tooley Street	Tim Walker 020 7525 2021

APPENDICES

No.	Title
Appendix 1	Hawkstone Road - Proposed loading only bay, permit bay extension and "At any time" waiting restrictions

AUDIT TRAIL

Lead Officer	Tim Walker, Senior Engineer	
Report Author	Michael Herd, Engineer	
Version	Final	
Dated	14 April 2011	
Key Decision?	No	
CONSULTATION WITH OTHER OFFICERS / DIRECTORATES / CABINET MEMBER		
Officer Title	Comments Sought	Comments included
Strategic Director for Communities, Law and Governance	No	No
Finance Director	No	No
Parking operations and development manager	No	No
Network manager	Yes	No
Parking and network management business unit manager	Yes	No
Cabinet Member	No	No
Date final report sent to Constitutional Team	14 April 2011	

NETWORK DEVELOPMENT



Environment & Housing Dept. Public Realm Division
PO Box 64529, London SE1 5LX

LEGEND

- Existing "At any time" waiting restriction
- Proposed "At any time" waiting restriction
- Existing Pay and display bay
- Proposed Loading only bay
- Existing permit bay
- Proposed Permit bay extension

Revision details	By	Date	Suffix
			A
			B

Project Number

1011_Q2_HOTSPOTS

Title

HAWKSTONE ROAD
PROPOSED_LOADING_ONLY_BAY_&_WAITING_RESTRICTIONS

Layout

DETAILED_DESIGN

Scale

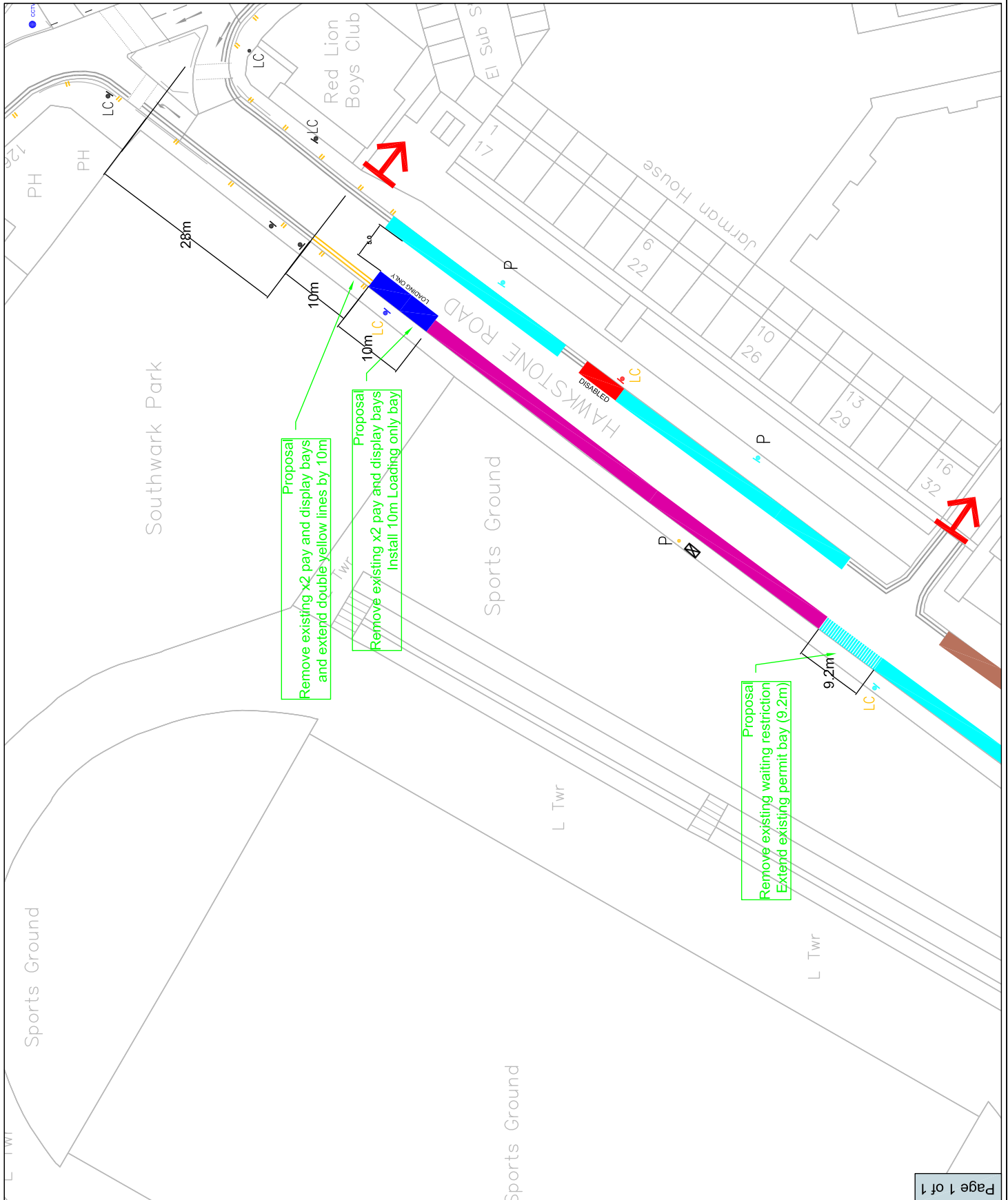
1:500

File Name

APPENDIX_1

Drawn	Designed	Checked	Approved
MH	MH	TW	TW
13/04/11	13/04/11	13/04/11	13/04/11

This map is based on Ordnance Survey material with the permission of Ordnance Survey on behalf of the Crown. Copyright © 2010. Unauthorised reproduction infringes Crown copyright and may lead to prosecution or civil proceedings. (0010001952) 2010



This page is intentionally blank.

MEMBERS & EXTERNAL DISTRIBUTION LIST MUNICIPAL YEAR 2010/11

COUNCIL: ROTHERHITHE COMMUNITY COUNCIL

NOTE: Original held by Community Councils Unit; amendments to Beverley Olamijulo
(tel: 020 7525 7234)

<u>OPEN</u>	<u>COPIES</u>	<u>OPEN</u>	<u>COPIES</u>
Councillor Jeff Hook (Chair)	1	Shahida Nasim	1
Councillor Wilma Nelson (Vice-chair)	1	LBS Audit Manager	
Councillor Columba Blango	1	Ground Floor	
Councillor Michael Situ	1	Tooley Street, SE1	
Councillor Richard Livingstone	1		
Councillor David Hubber	1		
Councillor Paul Noblet	1	TRADE UNIONS	
Councillor Catherine McDonald	1	UNISON Office Southwark	1
Councillor Lisa Rajan	1	Roy Fielding, GMB/APEX	1
		Mike Young TGWU/ACTS	1
		Tony O'Brien, UCATT	1
Constitutional Support Officer	60		
		NEIGHBOURHOOD HOUSING OFFICE	
MEMBERS OF PARLIAMENT		Rotherhithe Area Housing Office	
Simon Hughes, M.P.	1	153-159 Abbeyfield Road SE16 2LS	1
Harriet Harman, M.P.	1		
		TOTAL DISTRIBUTION	85
LIBRARIES	3	Dated:	15 April 2011
Local Studies Library	1		
PRESS:			
Southwark News	1		
South London Press	1		
EXTERNAL			
Community Action Southwark	1		
Hannibal House, 8 th floor			
Elephant & Castle, London SE1 6TE			